

# Septoplasty and Turbinectomy Packages

A surgical procedure to straighten the bone and cartilage dividing the space between the nostrils (septum). The surgical procedure may be performed together with Functional Endoscopic Sinus Surgery (FESS) to treat chronic sinusitis, nasal polyps and other conditions that cause blockage.

A turbinectomy may also be carried out at the same time to remove some or all of the turbinate bones in the nasal passage.

**Price From:**

**\$85,000**

## Package Price (including hospital and doctor fees)

	Standard Room	Twin Room	Private Room
Septoplasty + turbinectomy (bilateral)	\$85,000	\$113,400	\$144,600

## Prices Include:

- Room (1 night) and meals
- Specialists' fees
- Nursing care
- Operating theatre
- Drugs and dressing

## Terms and Conditions:

- The package does not include procedures, laboratory or imaging tests, special equipment, treatment and medication beyond those included in the package.
- A specialist consultation is required prior to this procedure.
- This package is only available for designated doctors.
- Other extra charges include emergency or unsocial hours services beyond the routine procedures; procedures extending beyond the scheduled operating theatre time; and miscellaneous items such as extra refreshments and IDD telephone calls.

For full terms and conditions can the QR code to visit our website.



**All packaged items are fixed. Prices are subject to change without prior notice.**

For appointment and enquiry:

## Patient Service Centre

t 2537 7407

Email:

psc.referral@matilda.org

## Matilda Medical Centre

3/F, Prosperity Tower, 39 Queen's Road Central, Hong Kong

Effective from May 2023

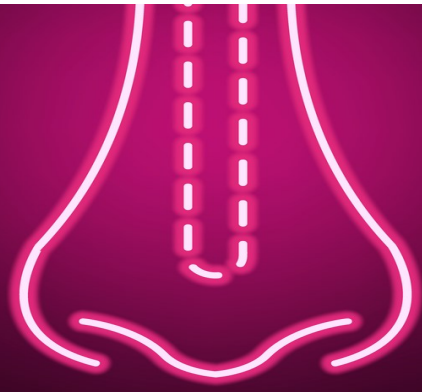
Reference:

BUN-SEPT



**matilda**

International Hospital  
明德國際醫院



# 鼻中隔整形術及鼻甲切除術套餐

由 \$85,000 起

矯正鼻中隔軟骨的矯正手術，或會跟功能性內窺鏡鼻竇手術一起進行，以治療慢性鼻竇炎、鼻息肉和其他引起阻塞的疾病。醫生亦可能會同時進行鼻甲切除術，以去除鼻腔內部分或全部鼻甲骨。

## 套餐費用 (包括醫院和醫生收費)

	標準房	雙人房	私家房
鼻中隔修補手術及鼻甲骨成形術 (兩邊)	\$85,000	\$113,400	\$144,600

## 條款及細則:

- 以上收費不包括套餐以外的程序、其他醫生費用、化驗、影像服務、特別的儀器、治療和藥物。
- 手術前需由專科醫生診症。
- 套餐只適用於指定醫生。
- 其他額外收費包括: 緊急服務或非正常營運時間進行的常規以外的手術、原定時間以外進行的醫療程序、以及其他雜項包括額外的飲品食物和長途電話費用等。

如欲參閱詳盡的收費政策，請掃描 QR code 瀏覽網站



所有套餐項目均固定。價格如有更改，恕不另行通知。

## 費用已包括:

- 房間(一晚)和膳食
- 專科醫生費用
- 護理服務
- 手術室費用
- 藥物和洗傷口敷料

預約及查詢，請聯絡

客戶服務中心

電話 2537 7407

電郵: [psc.referral@matilda.org](mailto:psc.referral@matilda.org)

明德醫療中心  
香港中環皇后大道中 39 號豐盛創建大廈  
3 樓



**matilda**  
International Hospital  
明德國際醫院

2023 年 5 月起生效

BUN-SEPT